

Champ® VMV LED Series Luminaires

Improve safety, reliability and energy efficiency

Cl. I, Div. 2, Groups A, B, C, D
Cl. I, Zone 2
Cl. II, Groups E, F, G
Cl. III

UL Listed & CSA Certified
IECEX / ATEX
Simultaneous Presence
Wet Location, NEMA 4X, IP66

2L

It is a new era for Champ® luminaires. This luminaire provides the same durability and reliability of a traditional Champ luminaire, coupled with the low cost of ownership and energy efficiency of Cooper Crouse-Hinds LED technology. High-performance LEDs and a solid-state electronic driver provide light where you need it, at a fraction of the operating cost of HID technologies.

The Champ VMV LED Family

VMV LED Series Luminaires are designed to provide full-spectrum, crisp, white light with a true IES type V distribution. This white light output provides the human eye with better visual acuity compared to the poor rendering and color quality produced by a typical HPS fixture. Three versions of the Champ VMV LED are available, providing ideal solutions for a wide range of applications.

VMV5L - Ideal for Low-light Applications

The VMV5L luminaire is ideal for locations requiring lower light levels. This fixture provides light output equivalent to many 100W - 150W high pressure sodium (HPS) luminaires.

VMV7L - Wide Area Illumination

The VMV7L luminaire is designed for wide area illumination and for mounting heights of greater than 12 feet. Using less than 100 watts, the VMV7L provides light output equivalent to many 175W metal halide (MH) fixtures, while providing 60,000 hours of illumination; over 6 times the life of a typical MH luminaire.

VMV9L - High Lumen Output

The high output VMV9L provides increased lumen performance at the same power level of the 7L model. The VMV9L uses advanced LED technology to achieve a higher lumen/watt rating and can be used for mounting heights up to 20 feet.

Applications:

- Wide area illumination at mounting heights from 12 to 20 feet
- Locations requiring continuous and consistent light levels in extreme ambient temperatures
- Areas requiring frequent on-and-off of lights
- Where flammable vapors, gases, ignitable dusts, fibers or flyings are present; indoors or outdoors
- Where extremely corrosive, wet, dusty, hot and/or cold conditions exist
- NEMA 4X, marine, wet locations and hose-down environments
- Manufacturing plants; heavy industrial, chemical, petrochemical or pharmaceutical facilities; platforms; loading docks; tunnels

Champ VMV LED Benefits:

Enhance safety and productivity

- Instant illumination and restrike
- Better visibility with crisp, white light
- T5 temperature rating – safely operate in the most hazardous environments
- Cold temperature operation / no warm-up required
- “No lights-out” feature – if a single LED fails, circuit provides enough useable light to remaining LEDs

Reduce operation and maintenance costs

- Easy installation - compact modular fixture attaches onto existing Champ mounting module
- Energy-efficient technology use up to ½ the power of standard HID luminaires
- Provides up to 60,000 hours rated life – eliminates need for frequent lamp replacement
- Contains no mercury or other hazardous substances

Reliable performance in any environment

- Shock- and vibration-resistant solid-state luminaires have no filaments or glass components that could break - greatly reduces the risk of premature failure
- Operating ambient -40°C to 55°C
- Low temperature starting -30°C
- Dark sky compliant

Certifications & Compliances:

NEC

- Class I, Division 2, Groups A, B, C, D
- Class I, Zone 2
- Class II, Groups E, F, G
- Class III
- Simultaneous Presence
- Wet Location, NEMA 4X, IP66

UL Standards

- UL 844
- UL1598 luminaires, UL1598A marine

CSA Standard

- CSA C22.2 No. 137

IECEX/ATEX

- Ex II 3 G Ex nA II (T4 at 55°C)
- Ex II 3 G Ex nA II (T5 at 40°C)
- EN60079-0:2006, EN60079-15:2006

Electrical Ratings:

	VMV5L	VMV7L	VMV9L
Voltage Range, VAC*	120V - 240V	120V - 240V	120V - 240V
Frequency	50 / 60 Hz	50 / 60 Hz	50 / 60 Hz
Input Power	70 Watts	98 Watts	98 Watts
Input Amps	0.6 / 0.3	0.9 / 0.5	0.9 / 0.5
Power Factor	>.85	>.85	>.85
Replaces up to	150W HPS	175W MH	175W MHPS

*277V option available for cUL.



Standard Materials:

- Lamp housing and adapter – copper-free aluminum with Corro-free™ epoxy powder coat
- Extrusion - aluminum with black anodized finish
- Lens – heat- and impact-resistant glass
- Gaskets – silicone
- External hardware – stainless steel
- Factory-sealed, no external seals required

LED System:

- High brightness light emitting diode (LED) arrays
- Color temperature: 5500°k to 6500°k (CCT)
- 70% lumen maintenance at 60,000 hours
- CRI > 75

Drivers:

- 90VAC - 264VAC, 50/60Hz
- 277VAC option available
- High efficiency 88% at maximum load
- Inherent thermal protection
- Line transient protection
 - 2KV line to line, 4KV line to ground

2L Champ® VMV LED Series Luminaires

Improve safety, reliability and energy efficiency

Cl. I, Div. 2, Groups A, B, C, D
Cl. I, Zone 2
Cl. II, Groups E, F, G
Cl. III

UL Listed & CSA Certified
IECEX / ATEX
Simultaneous Presence
Wet Location, NEMA 4X, IP66

Installation and replacement made simple

Modular design - This contractor-friendly design is ideal for both retrofit and new construction applications. These luminaires are installed in the same manner and use the same mounting modules as existing Champ® Series luminaires. The compact modular design of the VMVL allows for easy component replacement and future upgrade.



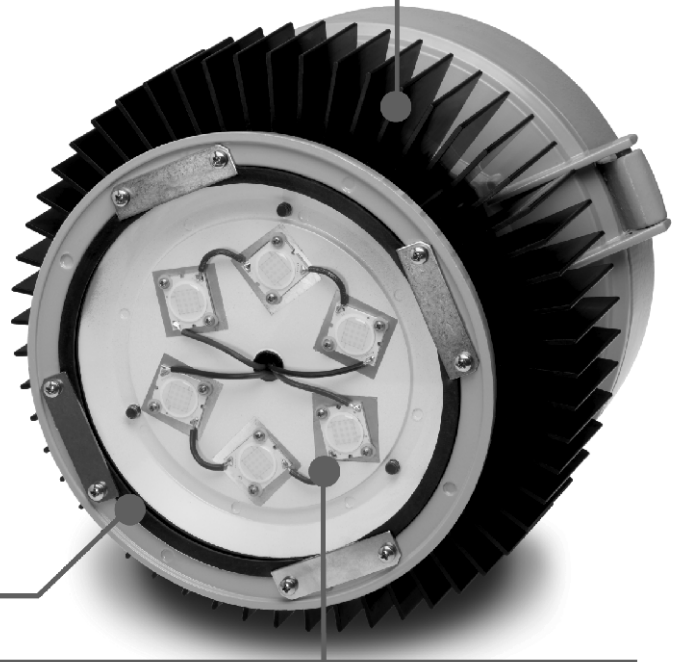
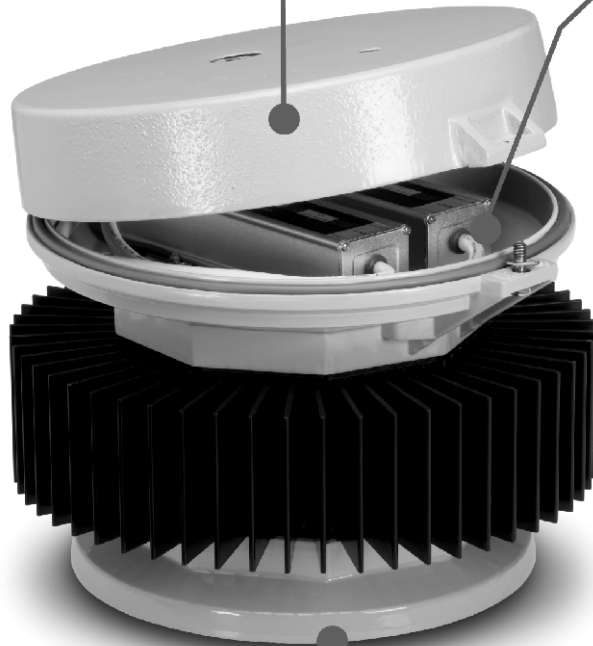
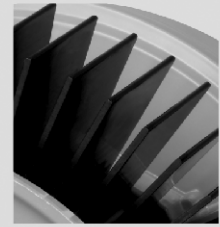
High efficiency and lumen output

Driver module assembly - High efficiency LED drivers provide regulated current to the LEDs. The LED drivers are designed to provide reliable operation in the harshest environments.



Safe, reliable heat transfer

Heatsink - A durable extrusion provides safe and effective heat transfer from the LED assembly to the outside environment, ensuring low LED junction temperature, reliability and sustained lumen performance. The vertical fin design facilitates airflow and dust shedding.



NEMA 4X Rated

LED Housing Assembly - The LED housing is constructed of durable die cast aluminum providing an efficient thermal path to the heatsink assembly. The impact resistant lens is sealed from the outside environment and provides ingress protection against water and dust. Multi-die LED arrays are used to provide energy efficient, long-life white light.



S896 Optional teflon coating

This optional teflon coating on lens provides additional shatter protection.

2L

Champ® VMV LED Series Luminaires

Cl. I, Div. 2, Groups A, B, C, D
Cl. I, Zone 2
Cl. II, Groups E, F, G
Cl. III

UL Listed & CSA Certified
IECEx / ATEX
Simultaneous Presence
Wet Location, NEMA 4X, IP66

2L

**Improve safety, reliability
and energy efficiency**

Ordering Information:

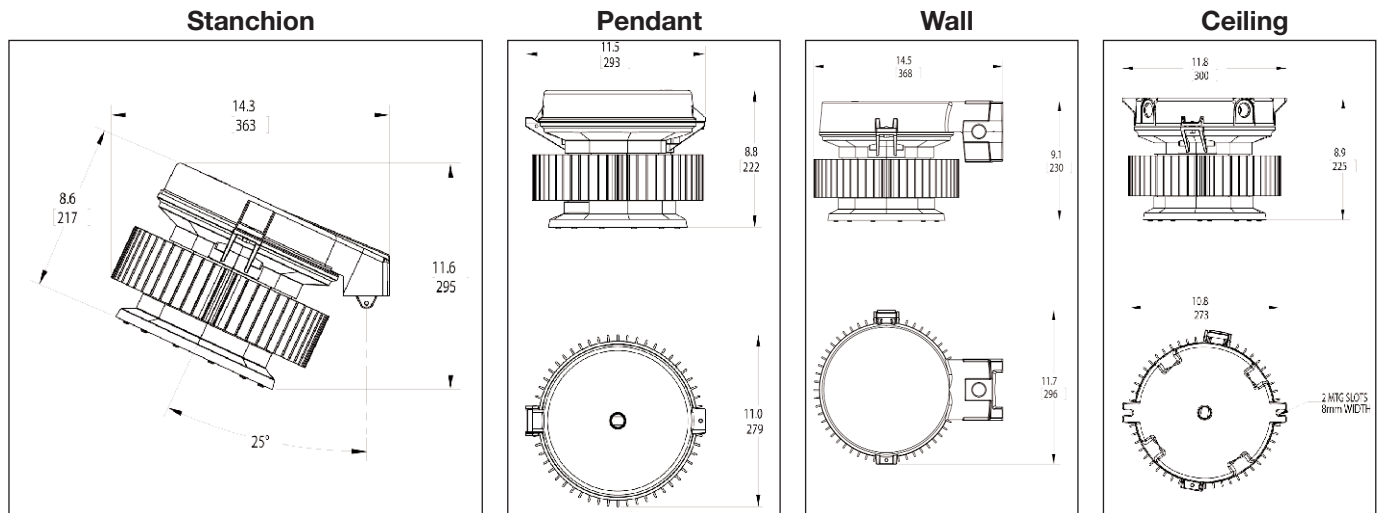
Mounting Style	Hub Size (in.)	5L Series	7L Series	9L Series
Luminaire Less Mounting Module	-----	VMV5LDM1/UNV	VMV7LDM1/UNV	VMV9LDM1/UNV
Pendant	¾	VMV5L2ADM1/UNV	VMV7L2ADM1/UNV	VMV9L2ADM1/UNV
Pendant	1	VMV5L3ADM1/UNV	VMV7L3ADM1/UNV	VMV9L3ADM1/UNV
Flexible Pendant	¾	VMV5L2HADM1/UNV	VMV7L2HADM1/UNV	VMV9L2HADM1/UNV
Ceiling Mount Thru Feed	¾	VMV5L2CDM1/UNV	VMV7L2CDM1/UNV	VMV9L2CDM1/UNV
Ceiling Mount Thru Feed	1	VMV5L3CDM1/UNV	VMV7L3CDM1/UNV	VMV9L3CDM1/UNV
Wall Mount Thru Feed	¾	VMV5L2TWDM1/UNV	VMV7L2TWDM1/UNV	VMV9L2TWDM1/UNV
Wall Mount Thru Feed	1	VMV5L3TWDM1/UNV	VMV7L3TWDM1/UNV	VMV9L3TWDM1/UNV
Stanchion 25°	1½	VMV5LJDM1/UNV	VMV7LJDM1/UNV	VMV9LJDM1/UNV
Stanchion	1½	VMV5LPDM1/UNV	VMV7LPDM1/UNV	VMV9LPDM1/UNV

For CEC/CSA (cUL), add **suffix M2** to catalog number (Example: VMV7LDM1/UNV M2).
For IECEx/ATEX, add **prefix N** to catalog number (Example: NVMV7LDM1/UNV).

Options:

Description	Suffix
Teflon coating on lens (NEC/CEC only) for additional shatter protection	S896

Dimensions:



Weights:

Net Luminaire Weight:	17.8 lb.	8.07 kg.
Mounting Module add (lb.)		
Pendant	1.25	0.57
Flexible Pendant	1.50	0.68
Ceiling	2.75	1.25
Wall	4.50	2.04
Angle Stanchion	3.50	1.59
Straight Stanchion	4.50	2.04

Ambient Temperature:

	Max. Temp. °C	Cl. I, Div. 2	Cl. II, Div. 1 & 2 / Cl. III / Simu. Presence
VMV5L	40	T5	T4A
	55	T4A	T4
VMV7L	40	T5	T4A
	55	T4A	T4
VMV9L	40	T5	T4A
	55	T4A	T4

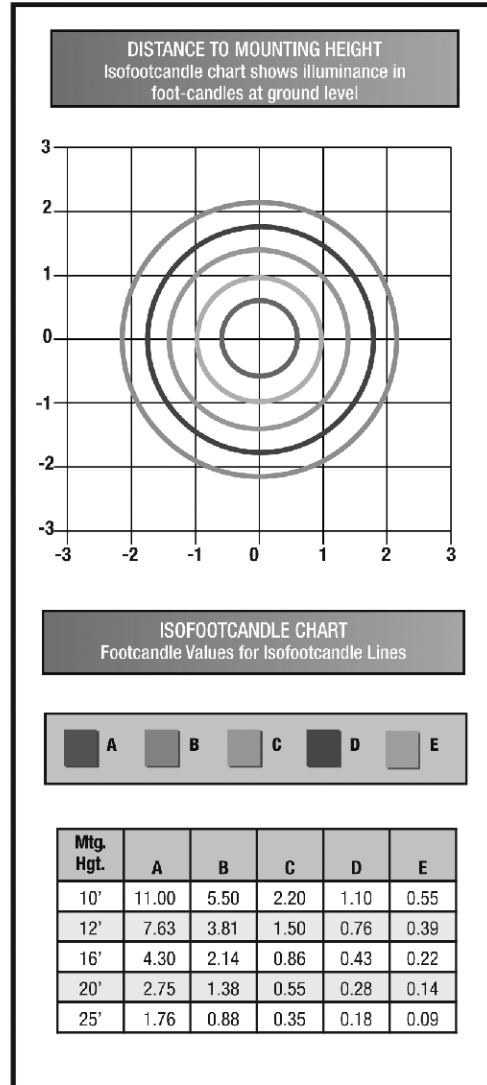
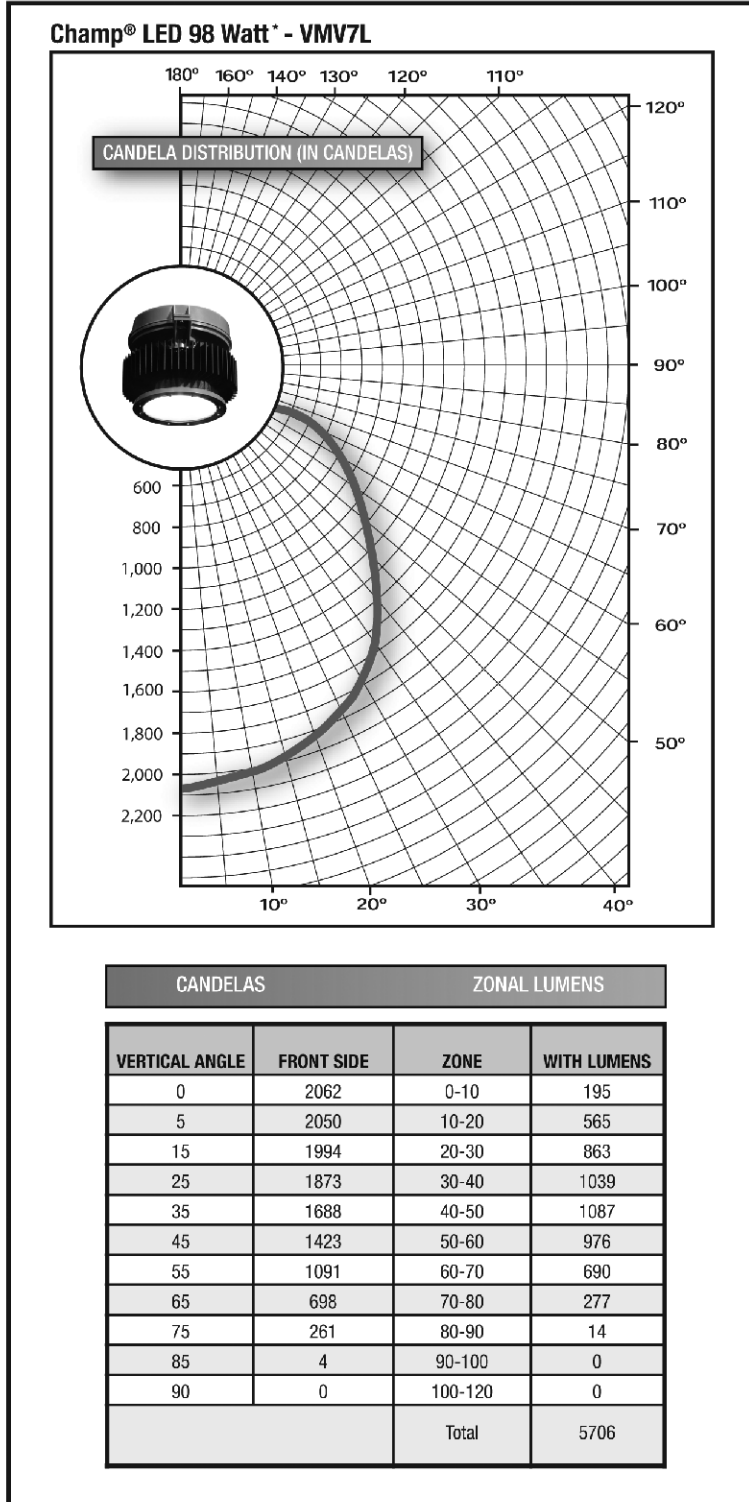
Champ® VMV LED Series Luminaires

Improve safety, reliability and
energy efficiency

Cl. I, Div. 2, Groups A, B, C, D
Cl. I, Zone 2
Cl. II, Groups E, F, G
Cl. III

UL Listed & CSA Certified
IECEX / ATEX
Simultaneous Presence
Wet Location, NEMA 4X, IP66

Photometric Data:



*Testing performed in accordance with IES LM-79-08.